

Why plant trees on your property?

The right trees in the right place are an investment in your property, business and future income.

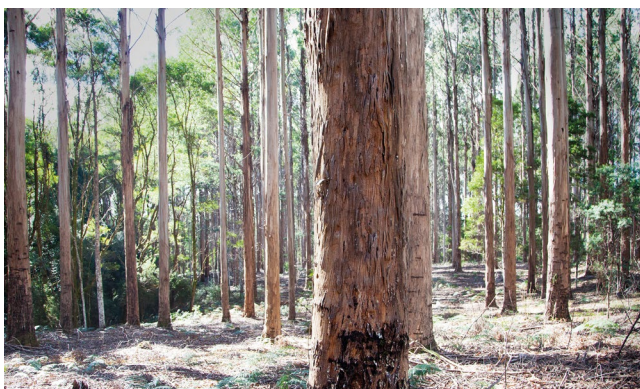


Why plant trees on your property?

Investing in growing trees on your property could be one of the smartest business investments you make

Planting trees in the right place on farms with the intention of harvesting and replanting is a win-win for the environment, society and landowners. Trees can deliver increased primary production productivity while simultaneously growing high value timber products, delivering biofuel, improving water quality and efficiency, and improving the carbon balance. Trees also protect the land for future generations while growing high value products. Trees on farms will grow the future.

- Trees in the right place increase farm productivity
- Trees improve water efficiency and water quality
- Trees improve the carbon balance
- Trees protect the land for the future
- The global demand for timber is expected to quadruple by 2050



How growing trees will help your farm

INCREASE YOUR FARM PRODUCTIVITY

- Trees provide shade and shelter
- Trees play a part in modifying the microclimate
- Trees protect crops from wind = less damage to leaves on crops & less water evaporation
- Trees provide protection for livestock = less livestock mortality
- Trees will help diversify your income stream

Case studies have found that farm systems that included trees were more productive and profitable than agriculture only enterprises with internal rates of return typically around 8%.

**Source: Formosa Case Study 4 – August 2018, "How Profitable is Agroforestry?", Private Forests Tasmania*

IMPROVE WATER EFFICIENCY ON THE FARM

- Trees provide a buffer from evaporation when planted alongside crops
- When planted near streams, trees help improve water quality and reduce turbidity

Case-study: In the Tasmanian midlands, the potential water evaporation reduction over one year for a 25-hectare paddock was 20-35ml.

**Source: Trees Reduce Paddock Water Loss (evaporation) Mendham, D O'Grady, A & Moroni, M, Private Forests Tasmania.*

Why plant trees on your property?

Protect your land – it's your most important asset...

Planting trees can help
protect your land against
extreme weather events

Increase the biomass of your
pastures. Extended dry periods
can expose soil to compaction
and wind and water erosion

Increase the value of your land
by increasing biodiversity and
amenity with trees

BECOME PART OF A SUSTAINABLE MARKET

- In a report by Pollinate in 2019 it was revealed that 66% of the Tasmanian Voting Public are either very or extremely concerned about the environment and 83% are concerned about climate change
- Many consumers prefer a sustainable brand and according to a report done by Nielsen (a global provider of market research) in 2019, consumers are putting their dollars where their values are
- Between 2014 and 2017, products in the sustainable category grew by nearly 3%, while conventional products dropped by 4%

**"... it's soon to be the decade
of the sustainable shopper, making
sustainability a consistent growth
opportunity for manufacturing"**

**Source: Nielsen 2018, "Was 2018 the year of the influential sustainable consumer?"*

PLANTING TREES ON YOUR PROPERTY WILL IMPROVE THE CARBON BALANCE

- There is worldwide concern about the impacts of climate change. Consumers and retailers are adjusting their sourcing policies and seeking products with carbon footprint labelling
- When trees grow, they absorb carbon from the atmosphere and turn it into wood
- By using sustainably grown timber, instead of metal, concrete or plastic (which produce a lot of CO₂), you are reducing carbon emissions
- Biomass from trees can be used for biofuels, such as woodfire pellets
- Non-toxic 'green' chemicals that are derived from timber fibre are becoming highly sought after commercially

THERE HAS NEVER BEEN A BETTER TIME TO PLANT TREES

- There's a global shortage of timber
- The demand for timber is expected to quadruple worldwide by 2050
- The home building market is in constant need for timber
- Businesses are recognising the need to replace plastics and other carbon-intensive materials with natural, recyclable and renewable products
- New markets for materials from trees are becoming commercially popular, such as biofuel (eg. woodfire pellets) and green chemicals
- Growing commercially viable trees on your property could be a great opportunity for another income stream

Why plant trees on your property?

Think and plan

Think about what you want from planting trees on your farm.

- Do you want to diversify your crops and potential income instead of relying on one income source from the land?
- Are you concerned about the impacts of climate on your land, and want to improve soil quality and lessen water erosion?
- Do you have a sloping piece of land that you don't use for anything resourceful?

Hobart
30 Patrick Street
Hobart 7000

Launceston
State Government Offices
171 Westbury Road
Prospect 7250
PO Box 180
Kings Meadows 7249

Burnie
State Growth Offices
The Harris Building
Level 2, 49 Cattley Street
PO Box 68
Burnie 7320



Next steps



Arrange an appointment

Arrange an appointment with a Private Forester to talk about what you want to achieve from growing trees on your property. See if a consultant can come and assess your land and find out what is possible

contact@treealliance.com.au



Call the helpline

Call the helpline with any questions

Tel: 1300 661 009



Join the online community

Join our private Facebook group, the Growing the Future Online Community. Find out what other farmers are doing, chat to an expert, ask questions and share ideas.

<https://www.facebook.com/groups/596397397623294>

